



## Energy Facts

The power to trade

The latest  
comprehensive,  
fundamental data  
for power trading

## Energy Facts

### The basis for your trading decisions

Optimizing electricity trading on the basis of economic factors depends on a host of fundamental factors both in the spot and futures markets. These factors can be broken down into supply-related and demand-related parameters which have a different impact on pricing. The collection, quality assurance, validation, recording and modelling of these fundamental data is extremely time-consuming, but for electricity traders and analysts it provides an important basis for decision-making.

With Energy Facts, the new data product from Deutsche Börse – Market Data & Analytics, you can now focus on the development of pricing and risk models as well as trading strategies. Energy Facts provides the necessary fundamental factors for the European energy market; up-to-the-minute, reliable, timely information on utilization, cross-border capacities, wind energy and other meteorological data are supplemented with analyses. The data are edited in a standardized format, quality-assured and delivered in real time thanks to continuous updating. All users also receive urgent trade-related market reports as soon as they are made public. Energy Facts currently provides data for Germany, France, Belgium and the Netherlands. Additional countries will be added by the end of 2009.

Energy Facts uses publicly available data from the Internet, proprietary data from specialized providers and modelled data from Deutsche Börse.

You can obtain Energy Facts via our new web terminal or as an XML web service. Deutsche Börse – Market Data & Analytics will also be delivering the data to established information providers in 2009 via its own CEF® real-time data feed.

#### **Market Data & Analytics – trade-relevant data and high-speed data feeds**

The Market Data & Analytics division of Deutsche Börse is one of the world's leading providers of market data on international stock exchanges and trading platforms. Deutsche Börse – Market Data & Analytics successfully supplies information providers, trading desks, analysts and issuers with real-time trading data, indices and other trading-relevant information products.

Not only do we have a wealth of experience and expertise in collecting, editing and distributing international market data, we also provide the necessary high-end IT infrastructure. We use the CEF® data feeds to distribute reliably precise information in real time to clients worldwide. On the strength of this know-how and in response to the huge demand for a wide-ranging energy data service relevant to traders, we developed Energy Facts.

# The Energy Facts data

## The latest, fundamental information

### Supply-related:

#### Electricity generation

The report contains information on net production in terms of the level of electricity fed into the public grid. You can adjust the report in the Energy Facts web terminal for different types of power generation and for specific data series.

#### Availability

The report defines the available capacity in terms of the net electricity production available for feed-in to the public grid. The report can be adjusted for different types of energy generation and for specific data series.

#### Wind energy

The report provides a 180-hour forecast of wind-generated electricity for a specific country. The report is updated every six hours and also includes the preceding wind energy forecasts (6 and 24 hours ago). Each wind energy forecast is displayed as a maximum, average and minimum calculation. Wind energy reports are currently available for Germany and the Netherlands.

#### Cross-border trade

The report shows the capacities and the capacity price in EUR/MWh for the selected border for the following day of delivery and with hourly resolution. Another report contains cross-border arbitrage opportunities. The differences between the spot prices of two border countries are compared with the capacity price of the previous day's cross-border auction with hourly resolution.

### Demand-related:

#### Temperature

You receive a temperature forecast based on the MOS (model output statistics) meteorological model. The report includes the current temperature forecast with hourly resolution for the next 240 hours as well as the preceding forecast (6 hours ago). The report is updated every six hours. The average and forecast temperature for a given country is calculated using the representative weighted average of different regions of the country.

#### Load

The report shows the vertical load of all control areas either individually or in aggregated form. The wind power production in the grid of control areas can be added to produce a total consumption value.

#### Consumption

This report gives a forecast of total consumption in a given country for the upcoming days with hourly resolution. The data are calculated by either the grid operator or Deutsche Börse AG's own models.

### Messages

#### Urgent Market Messages

The latest production-related news from the German energy market, sorted and grouped.

#### Energy Facts News

Updates on the Energy Facts data service.

### Marginal costs / profit margins

Short-term marginal costs and profit margins for coal, gasoil, combined-cycle gas and steam turbine power plants (CCGT) and gas turbines. All costs are calculated over various contract periods using the current market prices.

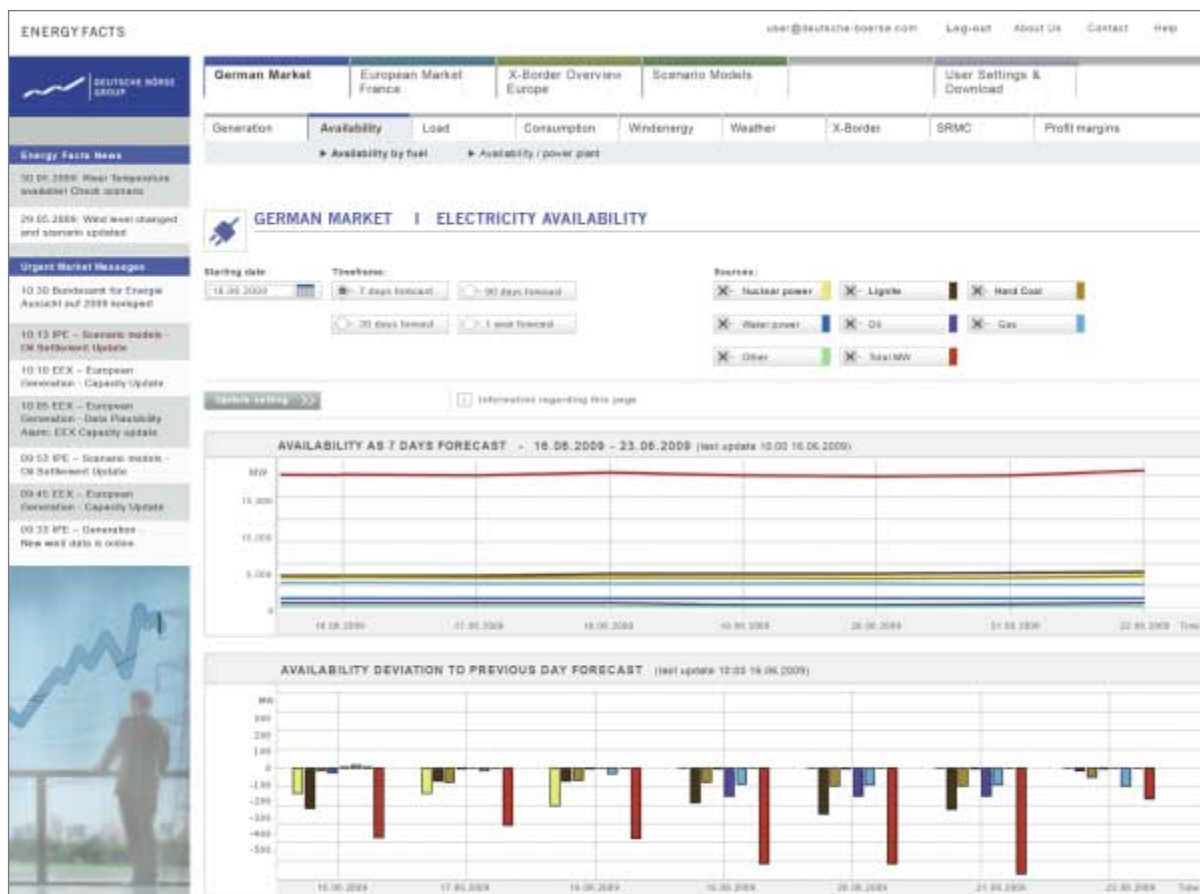
## The Energy Facts web terminal

### Clear, precise and user-friendly

All you need to use the Energy Facts web terminal is Internet access; no additional plug-ins are required.

The terminal's user interface is clearly structured and easy to navigate, so that you can find all the relevant data you need quickly.

Energy Facts is a push service: all the data on the web terminal are automatically updated and displayed in real time. The XML web service also provides data in real time.

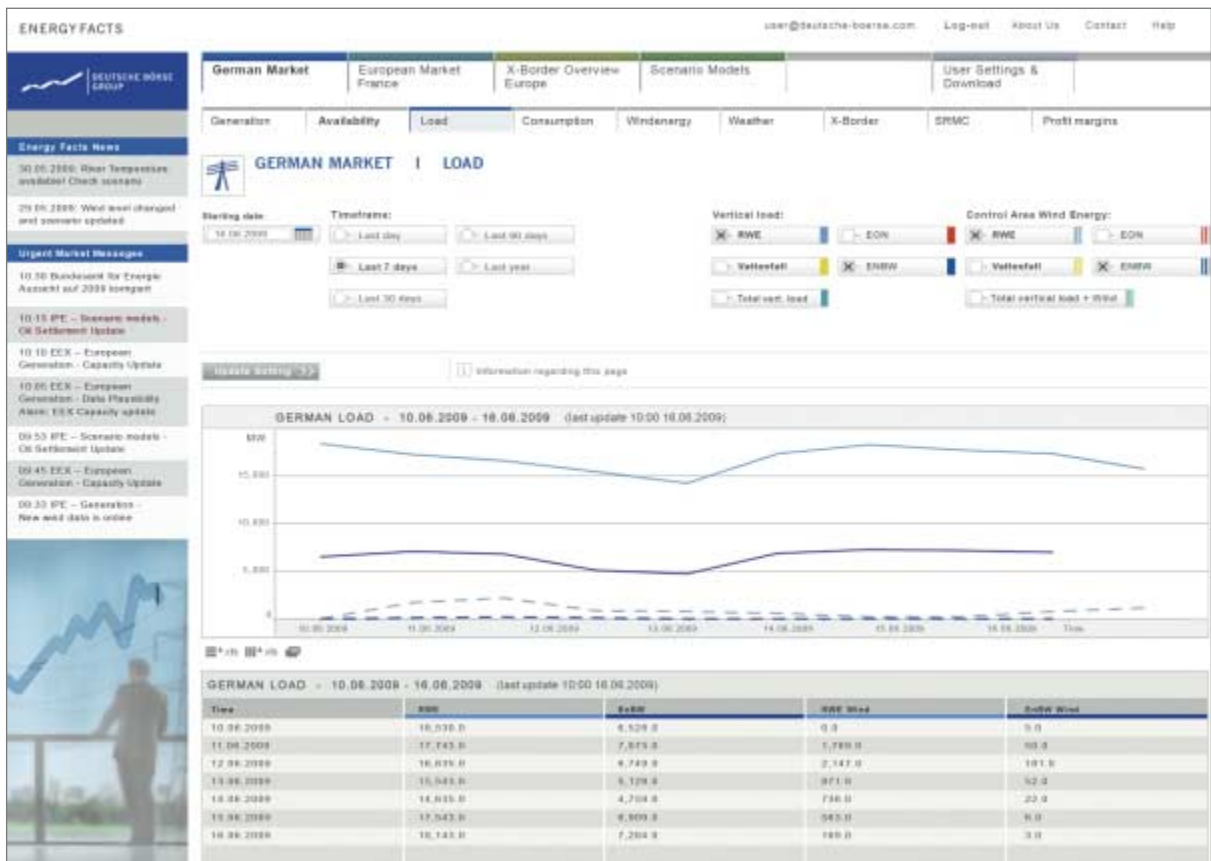


Energy Facts terminal: Available electricity capacity Germany

All data are displayed in charts and tables for easy analysis. They can be exported to Excel at the touch of a button, enabling them to be processed in other applications. Each report can also be printed.

**Pricing model**

There is a user-based monthly fee for using Energy Facts as a web terminal and as an XML web service. You can subscribe to proprietary data from information providers, e.g. EuroWind for wind energy, separately.



Energy Facts terminal: Vertical load Germany

**Published by**

Deutsche Börse AG  
Market Data & Analytics  
60485 Frankfurt/Main  
[www.energy-facts.net](http://www.energy-facts.net)

Phone +49-(0) 69-2 11-1 86 34

Fax +49-(0) 69-2 11-61 86 34

E-mail [energy-facts@deutsche-boerse.com](mailto:energy-facts@deutsche-boerse.com)

June 2009

Order Number 1000-2793